

Electromechanical 230V barrier



Max beam length

3 - 7 m

Opening time

2.5 - 8 s

Use frequency

50 - 60%



- Standard version equipped with adjustable electronic and mechanical limit switches
- Solid and sturdy steel body with protective cataphoresis treatment, polyester powder painted
- Ideal for medium transit passages and control of small, medium, private and parking areas



DIMENSIONS AND TECHNICAL SPECIFICATIONS

| Model | 617/3 | 617/4 | 617/6 |
|-------------------------------|--|-----------------|---------------------|
| Power supply voltage | 230V~ 50 Hz | | |
| Motor | Asynchronous single phase | | |
| Motor rotation speed | 2800 rpm | | 1400 rpm |
| Max. power | 315 W | | 380 W |
| Max. torque | 60 Nm | 100 Nm | 150 Nm |
| Material type | Steel | | |
| Type of treatment | Cataphoresis anti-corrosion treatment + Polyester powder paint | | |
| Type of deceleration | Electronic and mechanic - Adjustable | | |
| Type of beam | Rectangular - Rectangular with skirt - Rectangular articulated - Round | | |
| Operating ambient temperature | -20°C ÷ +55°C | | |
| Thermal protection | 140°C | | |
| Protection class | IP44 | | |
| Weight | 63 Kg | | 69 Kg |
| Dimensions (LxDxH) | 360 x 210 x 1085 mm | | 410 x 210 x 1085 mm |
| Beam max length | 3 m | 5 m | 7 m |
| Opening time | 2,5 s (90° - 3m) | 4 s (90° - 5 m) | 8 s (90° - 7 m) |
| Use frequency | 50% | | 60% |
| Electronic equipment | 615BPR | | |

FAMILY MODELS

| Model | Item code |
|---------------------|-----------|
| 617/3 Grey RAL 9006 | 1046173 |
| 617/4 Grey RAL 9006 | 1046174 |
| 617/6 Grey RAL 9006 | 1046176 |

PACKS

Packages 617 include: barrier cabinet, electromechanical transmission system, 615BPR control unit, installation accessories, hexagonal release key.

Typical Installation Examples page. 350

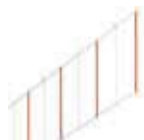
ELECTRONIC CONTROL UNITS



615BPR control unit
(incorporated in
automation)
Info at page 161

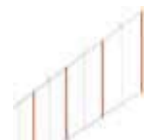
790281

COMMON ACCESSORIES FOR ALL APPLICATIONS



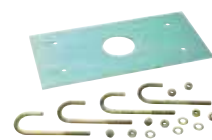
Skirt kit length 2 m ♦

428441



Skirt kit length 3 m ♦

428446



Foundation plate

00058P1800

>>



Support plate for fork

737621



Adjustable end foot for
beam support ♦

428805



Adjustable fork for
beam support

428806



Round beam light
connection kit 615

390081



Luminous cord 12 m
pack ♦

390993



Adhesive reflector kit
(6 pcs.)

490117

ACCESSORIES FOR 617/4 WITH RECTANGULAR BEAMS



Articulation kit - H max
ceiling 3 m
(only for rectangular
standard beams)

428137

NOTES

IMPORTANT: the beam fastening pocket and the balancing spring are not included in the cabinet and must be ordered separately. Consult the "specific accessories" and "Balancing springs" sections.

IMPORTANT: the rectangular and S beams have an anti-impact rubber profile; for balancing reasons, "active" safety edges cannot be installed on the beam profile.

For use of the skirt kit and/or end foot, we advise you to select the most suitable balancing spring (see relevant table on the following page).

The 617/3 barrier does not allow the installation of any type of accessory on the beam (i.e. end foot, skirt)

♦ For correct balancing, installing an end foot on a beam and on a beam with skirt requires a barrier cabinet for a beam length greater than 0.5 m.

♦ For correct balancing, installing lights on a round beam and a round beam with skirt for lengths greater than 2,800 mm requires a barrier cabinet for a beam length greater than 0.5 m. N.B. In case of beam with end foot and lights consider 1 m (0,5 m lights + 0,5 m endfoot).

RECTANGULAR BEAMS AND SPECIFIC ACCESSORIES FOR 617/3 AND 617/4



Rectangular standard beam

| Length (mm) | Item code |
|-------------|-----------|
| 2.315 | 428088 |
| 2.815 | 428089 |
| 3.815 | 428090 |
| 4.815 | 428091 |

The rectangular beams are supplied with protective rubber and for balancing reasons it is not possible to install on the beam profile the "active" safety edge.



Beam bracket for rectangular beam ♦

428342

BALANCING SPRINGS FOR RECTANGULAR BEAMS FOR 617/3 AND 617/4

| Rectangular beams | Rectangular artic. Beams | Rect. beams with end foot | Rect. beams with skirt | Item code |
|---------------------|--------------------------|---------------------------|------------------------|------------|
| 2.000 mm ÷ 2.700 mm | 2.000 mm ÷ 2.700 mm | | | 00058F1811 |
| 2.710 mm ÷ 3.400 mm | 2.710 mm ÷ 3.400 mm | 2.000 mm ÷ 2.700 mm | 2.000 mm ÷ 2.700 mm | 00058F1812 |
| 3.410 mm ÷ 4.000 mm | 3.410 mm ÷ 4.000 mm | 2.710 mm ÷ 3.400 mm | 2.710 mm ÷ 3.400 mm | 00058F1813 |
| 4.010 mm ÷ 4.600 mm | | 3.410 mm ÷ 4.000 mm | 3.410 mm ÷ 4.000 mm | 00058F1814 |
| 4.610 mm ÷ 5.000 mm | | 4.010 mm ÷ 5.000 mm | 4.010 mm ÷ 4.600 mm | 00058F1815 |
| | | | 4.610 mm ÷ 5.000 mm | 6100126 |

ROUND BEAMS S FOR 617/3 AND 617/4

Round beams S - Ø 75 mm
(adhesive labels not included)

| Length (mm) | Item code |
|-------------|-----------|
| 2.300 | 428045 |
| 3.300 | 428042 |
| 4.300 | 428043 |
| 5.000 | 428002 |

The round S beams are supplied with protective rubber and for balancing reasons it is not possible to install on the beam profile the "active" safety edge.



Fixing bracket for round beams S 615/620/B614 ♦

428445

BALANCING SPRINGS FOR ROUND BEAMS 617/3 AND 617/4

| Round beam | Round beam with lights | Round beam with end foot | Round beam with lights and end foot | Round beam with skirt | Round beam with lights and skirt | Round beam with skirt and end foot | Round beam S with lights, skirt and end foot | Item code |
|----------------|------------------------|--------------------------|-------------------------------------|-----------------------|----------------------------------|------------------------------------|--|------------|
| 0 ÷ 2300 mm | 0 ÷ 2300 mm | 0 ÷ 2300 mm | 0 ÷ 2300 mm | | | | | 00058F1811 |
| 2310 ÷ 3300 mm | 2310 ÷ 3300 mm | | | 0 ÷ 2300 mm | 0 ÷ 2300 mm | 0 ÷ 2300 mm | 0 ÷ 2300 mm | 00058F1812 |
| | | 2310 ÷ 3300 mm | 2310 ÷ 3300 mm | | | | | 00058F1813 |
| 3310 ÷ 4300 mm | 3310 ÷ 4300 mm | | | 2310 ÷ 3300 mm | 2310 ÷ 3300 mm | 2310 ÷ 3300 mm | 2310 ÷ 3300 mm | 00058F1814 |
| | | 3310 ÷ 4300 mm | 3310 ÷ 4300 mm | | | | | 00058F1815 |
| 4310 ÷ 5000 mm | 4310 ÷ 5000 mm | | | 3310 ÷ 4300 mm | 3310 ÷ 4300 mm | 3310 ÷ 4300 mm | 3310 ÷ 4300 mm | 6100126 |

NOTES

- ♦ The beam bracket is not included in the cabinet and must be ordered separately

RECTANGULAR BEAMS AND SPECIFIC ACCESSORIES FOR 617/6



Rectangular standard beams

| Length (mm) | Item code |
|-------------|-----------|
| 4.000 | 428061 |
| 5.000 | 428062 |
| 6.000 | 428063 |
| 7.000 | 428064 |

For balancing reasons it is not possible to install on the beam profile the "active" safety edge.



Beam bracket for rectangular beam ♦

428154

BALANCING SPRINGS FOR RECTANGULAR BEAMS FOR 617/6

| Rectangular beams | Rect. beams with end foot | Rect. beams with skirt | Item code |
|---------------------|---------------------------|------------------------|------------|
| 4.000 mm ÷ 4.800 mm | | | 00058F1816 |
| 4.800 mm ÷ 5.500 mm | 4.000 mm ÷ 4.800 mm | 4.000 mm ÷ 4.800 mm | 00058F1817 |
| 5.500 mm ÷ 6.300 mm | 4.800 mm ÷ 5.500 mm | 4.800 mm ÷ 5.500 mm | 00058F1818 |
| 6.300 mm ÷ 7.000 mm | 5.500 mm ÷ 6.000 mm | 5.500 mm ÷ 6.000 mm | 6100024 |

NOTES

- ♦ The beam bracket is not included in the cabinet and must be ordered separately

OTHER ACCESSORIES

Key operated buttons
page 176

Safety devices
page 190

Transmitters and receivers
page 168

Photocells and columns
page 186

Flashing lights
page 198

Various accessories
page 200